



CRESCENT BAY
BEACHFRONT VILLAS



YOUR SEASIDE SANCTUARY



JUST IMAGINE...

You peaceful heaven by the sea, where waves softly chime,
The ocean, a trusted friend, keeps perfect time,
Rooms with ocean views, where days are bright and grand,
Happiness like grains of sand, in the palm of your hand.



Inspired by phases of the moon, 'CRESCENT BAY', speaks for itself.
The design represents beauty through all angles and all shades of light.





YOUR PRIVATE PARADISE

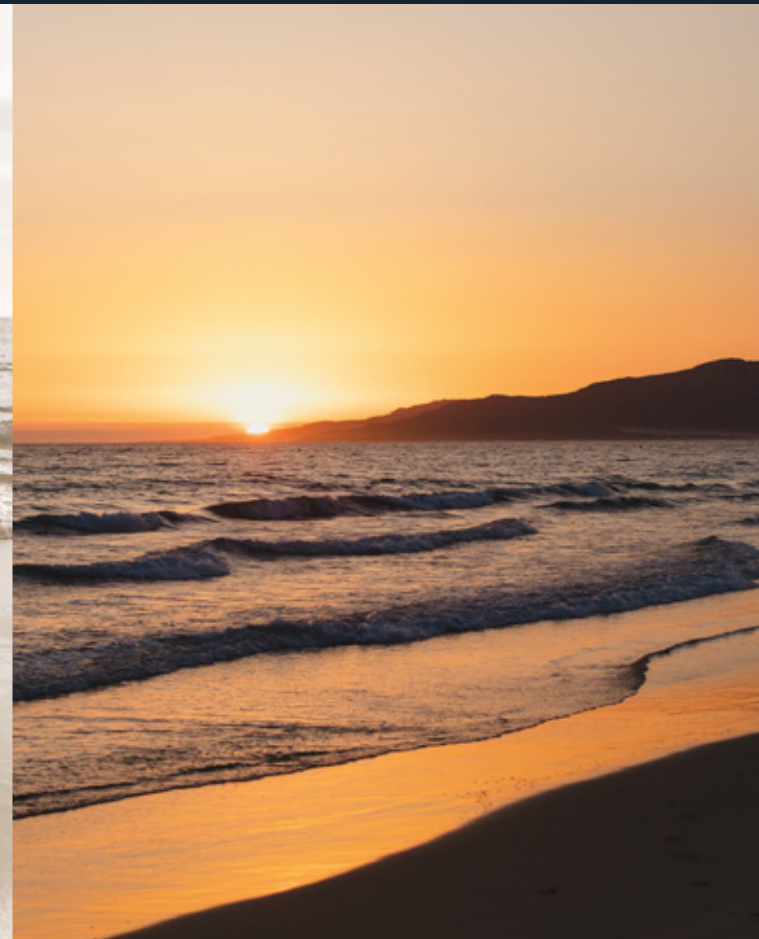
Wake up to the crisp sea breeze and wide ocean view.

Breathe in the fresh air.

Feel the warm ray of light,
surrounding your precious utopia.



YOUR EXQUISITE WAY OF LIVING



FROM DUSK 'TIL DAWN

Embrace each day from early morns first light.

Stroll along the coast, a pure delight.

Cruise the ocean's waves, nature all around.

End each day with a warm sunset,

moonlight's gentle crown.





PROJECT INFORMATION

DEVELOPER	INSAF PHUKET PANWA LIMITED
LOCATION	CAPE PANWA (SOUTHEAST PART OF THE ISLAND)
PROJECT AREA	7-0-26.9 RAI
NUMBER OF UNITS	6 UNITS
VILLA TYPE	3 TYPES
BUILT UP AREA	908.67-1,743.27 SQ.M.
PARKING	2 - 3
BEDROOMS	4, 5 AND 6 BEDROOMS
LAND AREA	898.00 - 2,807.60 SQ.M.

MASTERPLAN

Six exclusive luxury beachfront residences,
beautifully crafted and harmonizing
with natural surroundings.





TYPE 1

Iconic beachfront residence with a panoramic seascape,
where every room faces the sea.

Experience the beauty of nature from every angle,
Endless ocean waves just steps from your door,
And a private swimming pool for your enjoyment,
right on the shore.



Minimalistic design gives you peace and serenity,
for your undivided comfort
through your days and nights.

UNIT PLAN : TYPE 1

2 UNIT | 1743.27 VILLA SQ.M | 6 BEDROOM | 2 STOREY



1ST FLOOR



2ND FLOOR



TYPE 2

Wake up each morning to the splendid beach view.
A private swimming pool over your balcony,
just a few steps from the beach.



SPACIOUS SANCTUARY

The change of light throughout the day reveals
true beauty at different angles.
Warm, soothing ambience allows you to
let go of the world outside,
freeing your mind from all worries.

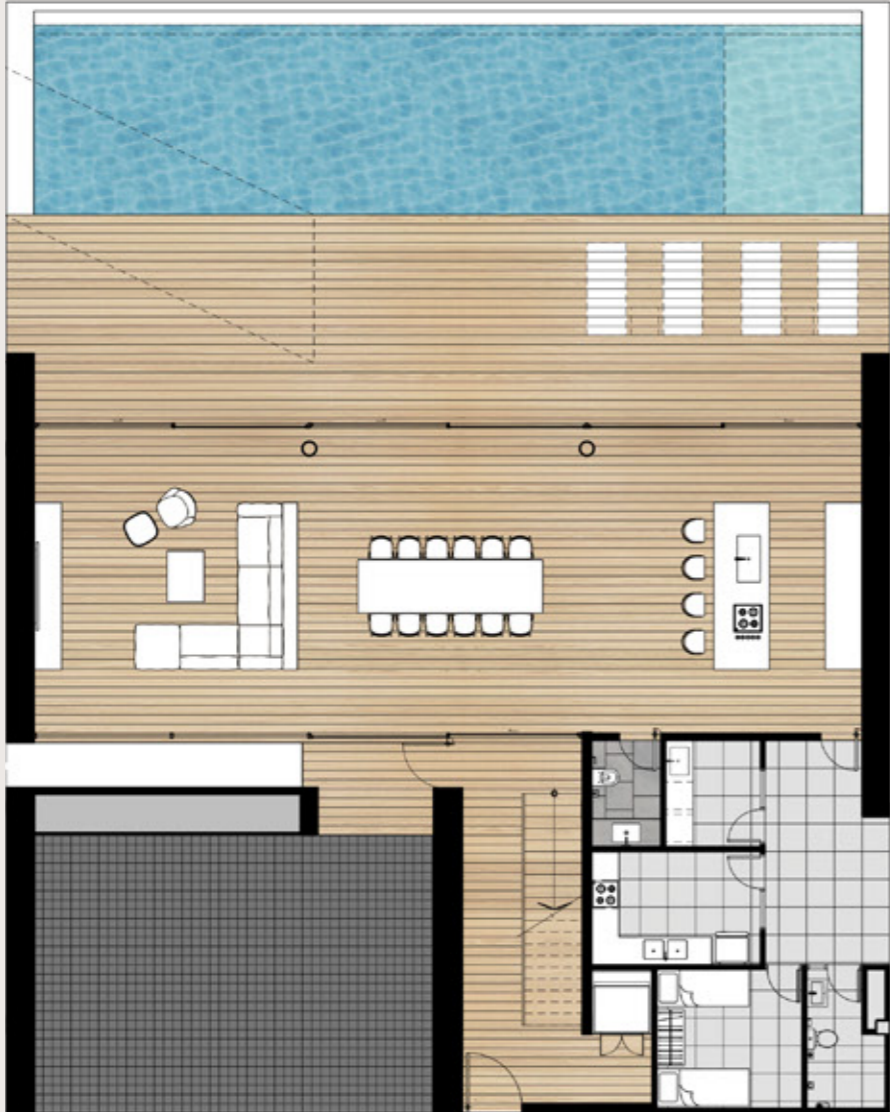


CHIPPERFIELD
bauhaus

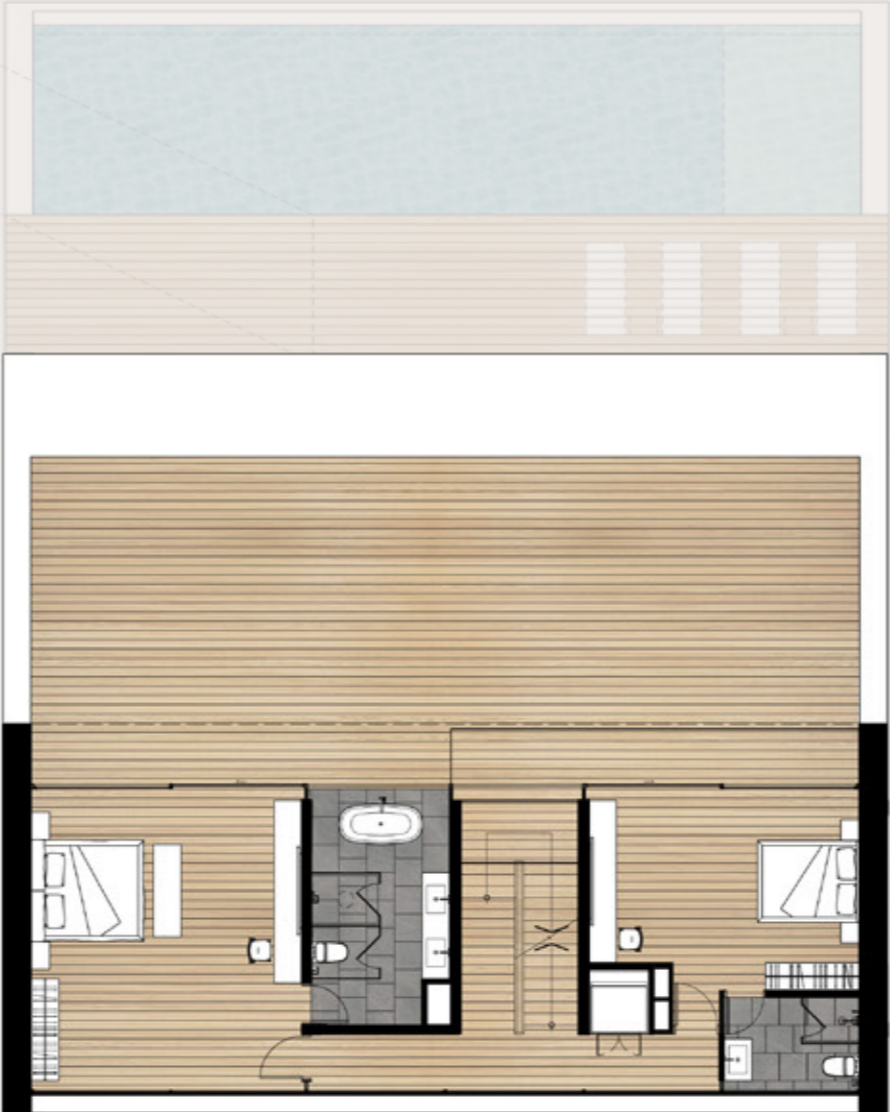
CHIPPERFIELD
MARINEN

UNIT PLAN : TYPE 2

3 UNIT | 908.67 VILLA SQ.M | 5 BEDROOM | 3 STOREY



1ST FLOOR



2ND FLOOR



3RD FLOOR

TYPE 3

The magnificent 3-storey landmark, at the heart of Crescent Bay. Standing in splendour and bringing you closer to the skyline, Type 3 offers the grandest view of the coastline. A panoramic bird's-eye view beyond what your eyes can define.





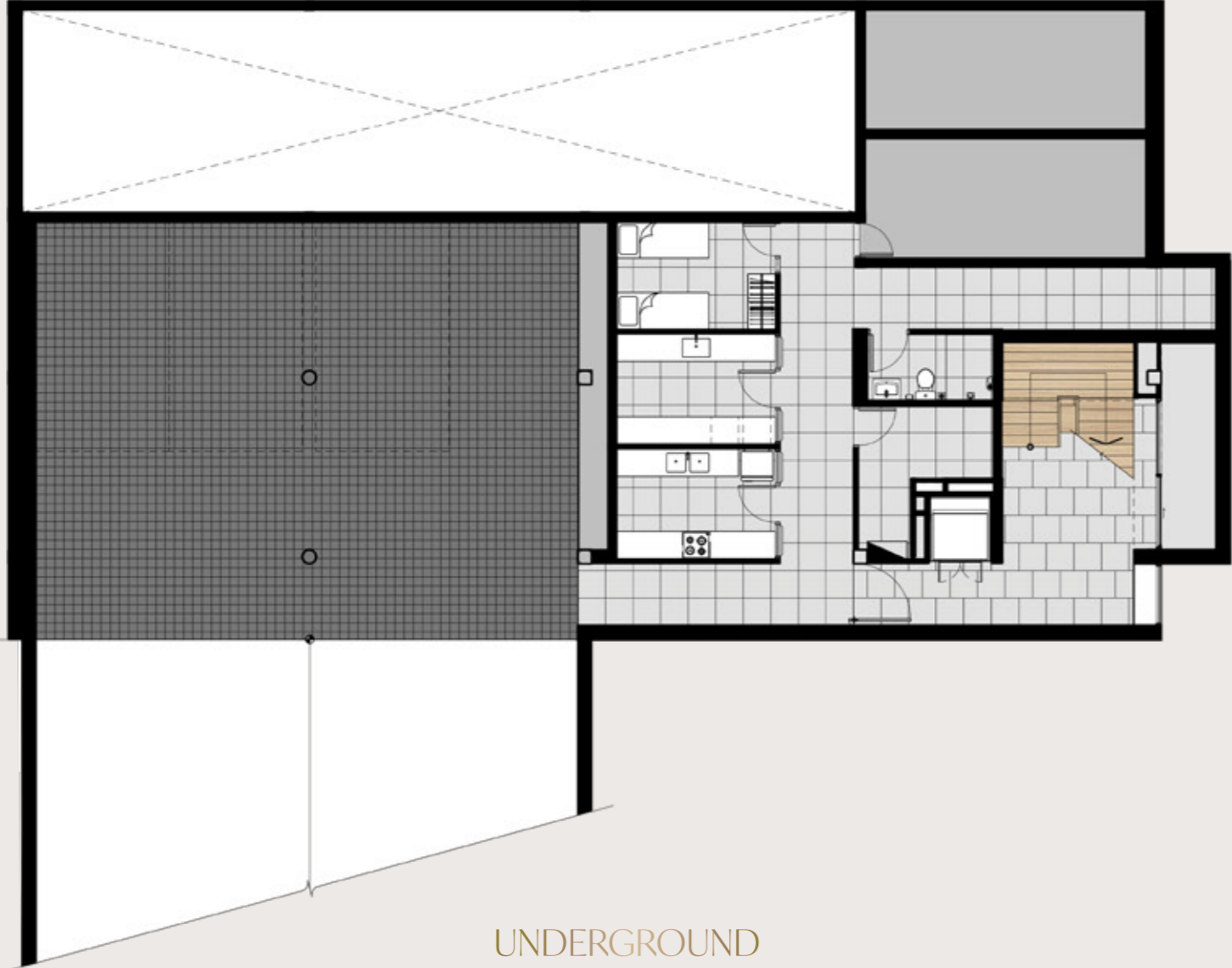
DOUBLE VOLUME DOUBLE DELIGHT

With twice the volume for the dining and living room,
there is ample space to breathe and savour.
Experience seamless functionality between sections.
And a close connection to the natural blooms.

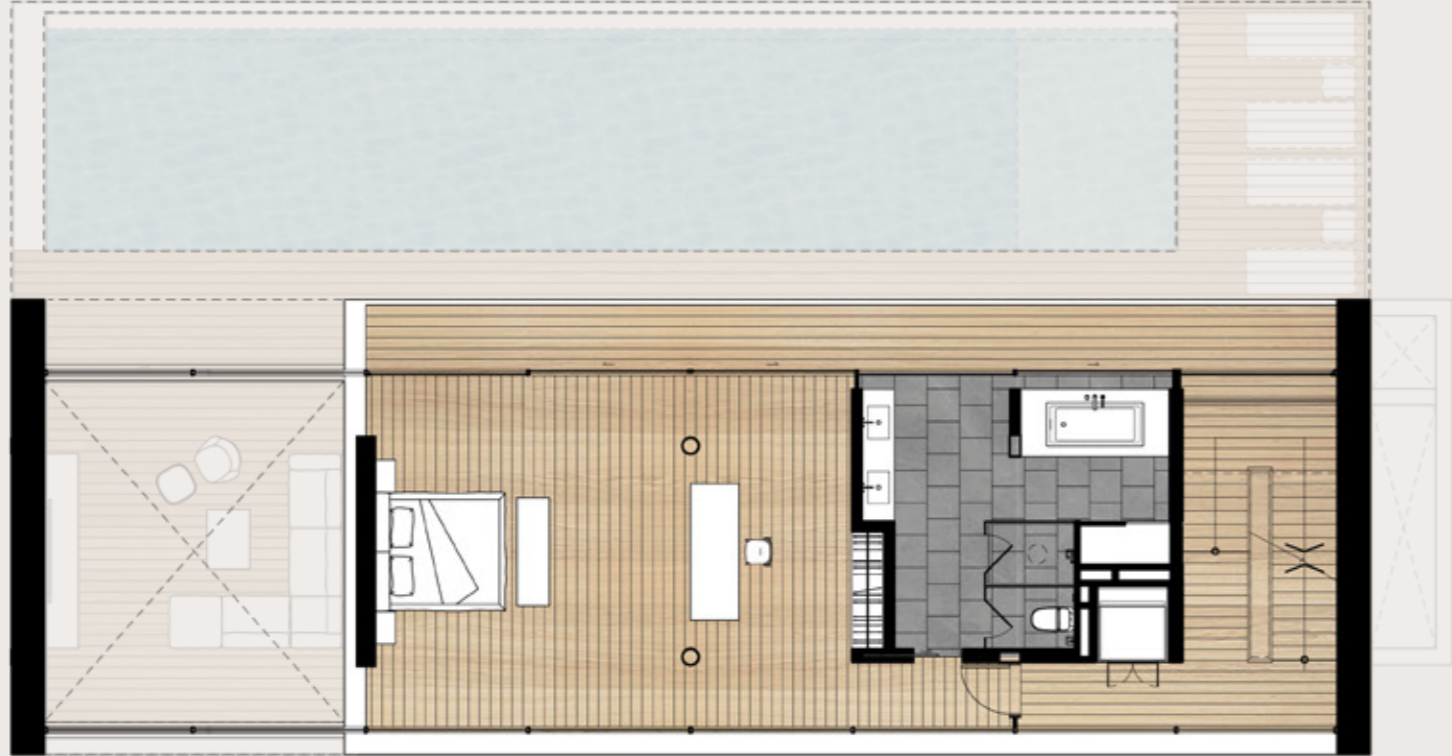


UNIT PLAN : TYPE 3

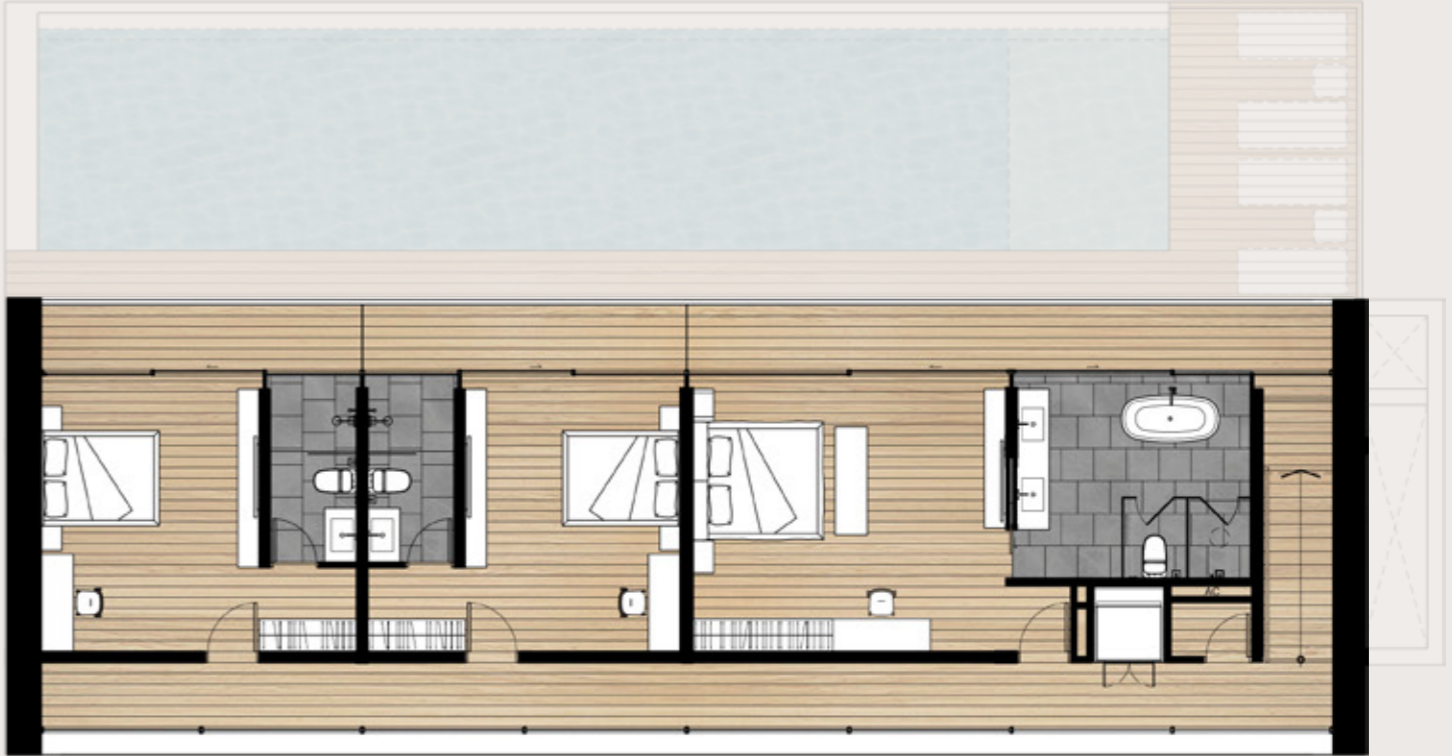
1 UNIT | 994.19 VILLA SQ.M | 4 BEDROOM | 3 STOREY



UNIT PLAN : TYPE 3



2ND FLOOR



3RD FLOOR



FUNCTION MEETS SOPHISTICATION

Natural light floods the residence from both the front and the back, enabling you to immerse yourself in nature.

Additionally, you'll find a generously sized parking area, ensuring ample space for you and your loved ones.

← SIMILAN ISLAND



LOCATION

Phuket International Airport

1.1 hr.

EDUCATION

HeadStart International School Phuket

20 min.

QSI International School of Phuket (QSI)

27 min.

Kajonkietsuksa School (KIS)

29 min.

British International School Phuket (BISP)

38 min.

UWC Thailand International School

55 min.

Prince of Songkla University, Phuket Campus

23 min.

Phuket Rajabhat University

30 min.

SHOPPING CENTER

Phuket Town

18 min.

KING POWER Phuket

18 min.

Central Phuket Floresta

23 min.

Central Phuket Festival

25 min.

Premium Outlet Phuket

29 min.

Porto de Phuket

51 min.

HOSPITAL

Dibuk Hospital

18 min.

Vachira Phuket Hospital

22 min.

Phuket Provincial Administrative Organization Hospital

22 min.

Mission Hospital Phuket

26 min.

Bangkok Hospital Siriroj

26 min.

Bangkok Hospital Phuket

28 min.

Patong Hospital

39 min.

HOTEL

V Villas Phuket

5 min.

Sri Panwa

7 min.


CRESCENT BAY

Crafted through years of expertise by our landscape architects, every tree at 'Crescent Bay' is meticulously planned and planted with exceptional attention to detail.

Our goal is to nurture a harmonious bond between nature and residents, enriching your joy and quality of life.





End each day with contentment.
Live a life embraced by the stars,
inside the architecture that unites art,
nature, and human as one.

Invest in heaven on Earth,
'CRESCENT BAY',
Your seaside sanctuary.





DBALP
DUANGRIT BUNNAG
ARCHITECT LIMITED

“Crescent Bay is the project I have always aspired to create. Meeting Mr. Phornthep and Mr. Anand has been such a pleasant complement. I was opted to fully express my creativity and managed to design every single detail according to the context. The design involves advanced materials; it’s an evolution. This residence speaks for those who are self-assured and fully bloomed, and know exactly what they want. This is by far one of my finest creations.”

Architect	:	DBALP Co,Ltd.
Chief Architect	:	Duangrit Bunnag
Structural Engineer	:	EMS Consultants Co.,Ltd.
MEP Engineer	:	EMS Consultants Co.,Ltd.
Lighting Designer	:	APLD Co,Ltd



SOLE AGENT

CBRE

THE LUXE NOMAD



The Luxe Nomad is Asia's largest luxury vacation rental management company with ~1200 rooms under exclusive management across Bali, Samui, Phuket, and Niseko. Whilst the hotel industry has many established brands, in the vacation rental space there is no global market leader and the industry is highly fragmented. It is our vision at The Luxe Nomad to build a globally recognised brand that both owners and guests can trust.

A project by



061-384-2244

crescentbaybeachfront@cbre.co.th

CRESCENTBAYPHUKET.COM

SOLE AGENT

CBRE

เจ้าของกรรมสิทธิ์ที่ดิน บริษัท อินซาฟ ภูเก็ต จำกัด (“บริษัทฯ”) ทะเบียนนิติบุคคลเลขที่ 0105559091960; สำนักงานใหญ่เลขที่ 28 ซอยสุขุมวิท 13 ถนนสุขุมวิท แขวงคลองเตยเหนือ เขตวัฒนา กรุงเทพมหานคร; ทุนจดทะเบียน 295,003,960 บาท; ที่ตั้งโครงการ หมู่ที่ 8 ตำบลวิชิต อำเภอเมืองภูเก็ต จังหวัดภูเก็ต; โฉนดที่ดินเลขที่ 122844, 37248 และ 63586 ตำบลวิชิต อำเภอเมือง จังหวัดภูเก็ต; เนื้อที่ที่ดินประมาณ 7-0-26.90 ไร่ ปลอดภัย-ผูกพัน; โครงการเป็นบ้านพักอาศัย สูง 2 ชั้น จำนวน 6 ยูนิต; เริ่มก่อสร้างประมาณเดือนกรกฎาคม 2567 และคาดว่าจะแล้วเสร็จประมาณเดือนมกราคม 2569; ภาพทั้งหมดเป็นภาพและบรรยากาศจำลอง เพื่อประกอบการโฆษณา บริษัทฯ ขอสงวนสิทธิ์ในการเปลี่ยนแปลงข้อมูลรายละเอียด ราคา การตกแต่งภายในตามความเหมาะสม โดยไม่ต้องแจ้งให้ทราบล่วงหน้า

ISF.CO.TH
isf@isf.co.th
02 853 9100